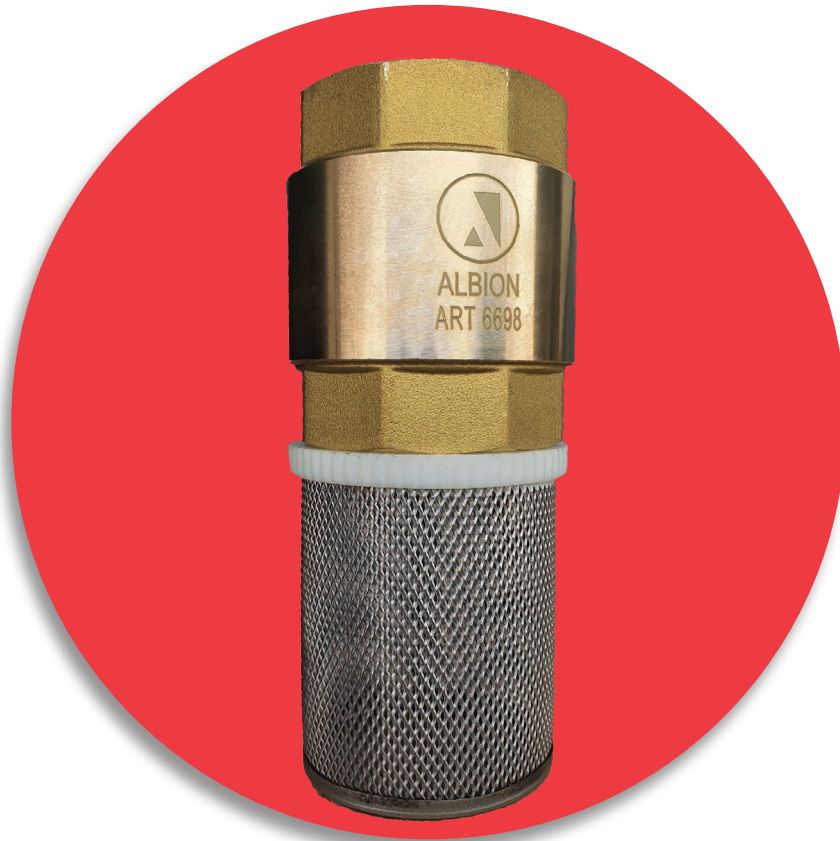




Installation & Operating Manual



ART 6698 Foot Valve

Albion Valves (UK) Ltd
www.albionvalvesuk.com
Email: sales@albionvalvesuk.com
Tel: 01226 729900



Contents

1. Introduction
2. Technical Data
3. Valve Features
4. Valve Installation
5. Approvals Classification
6. Troubleshooting
7. Warranty

1. Introduction

- Albion Valves (UK) Ltd ART 6698 Foot Valve is a non-return valve installed at the end of a pump suction in water or at the bottom of pipelines to prevent water from flowing backward when the pump is switched off.

2. Technical Data

- Maximum Working Pressure
 - o 20 bar
- Working Temperature Range
 - o 0°C - +100°C

3. Valve Features

- An ART 6698 Foot Valve is installed to keep a pump primed. This is done by controlling the direction of water flow to avoid water or fluid loss in a suction line. As soon as the pump stops the valve closes.

4. Valve Installation

- An ART 6698 Foot Valve is a type of check valve that is typically installed at a pump or at the bottom of a pipeline (hence the name).
- Typically, ART 6698 Foot Valves will work best when flow velocities are less than 1.5 m/s. If flow velocities are more than 1.5m/s, the risk of cavitation will increase,

5. Approvals Classification

- Albion Valves (UK) Ltd ART 6698 has a WRAS Approval.



6. Troubleshooting

- Albion Valves (UK) Ltd. ART 6698 should be kept as clean as possible. Any debris or foreign objects that is contained within the Foot Valve may prevent free disc movement and seating.
- Albion Valves (UK) Ltd ART 6698, along with all other Foot Valves are susceptible to wire drawing across the seat and disc flutter.

7. Warranty

- Albion Valves (UK) Ltd ART 6698 is supported by a 12 month warranty. Further details can be found on our website.



About Albion Valves (UK) Limited

Albion Valves (UK) Limited has been in the industrial heating and valve market for over 40 years, with this comes a wealth of knowledge and expertise that allows us to support our network of independent distributors and their customers.

Albion aims to supply a readily available, complete, quality valve solution alongside excellent cradle-to-grave support and service.

That is why we say, 'It's all at Albion'.

Quality

Whatever you need, you can rest assured that if it comes from Albion it has been designed and manufactured to deliver optimum performance and is accredited with the necessary approvals. Our in-house quality and technical departments are always on hand too!

Service

Our cradle-to-grave approach means you will never be on your own. Whether you need assistance with your system designs, an industry-leading turnaround time on your quote, or some help with commissioning after installation, we have a team to help!

Delivery

We know that time is money, and when a priority project depends on a part, you can trust Albion to deliver. We deliver 95% of products the next day with 99.98% accuracy!

Choice

We may have started with a single brass ball valve, but our range has grown substantially since and we can now offer a full building services valve solution, alongside a comprehensive range of valves for the industrial and process markets.

It is becoming more and more apparent to the industry, that it really is, all at Albion.