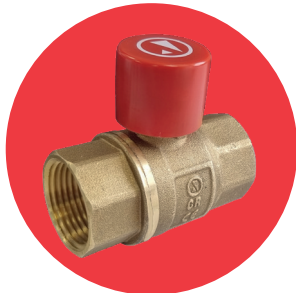


# ART 50 95

## PN40 DZR Brass Ball Valve with Lockshield Nut & Cap



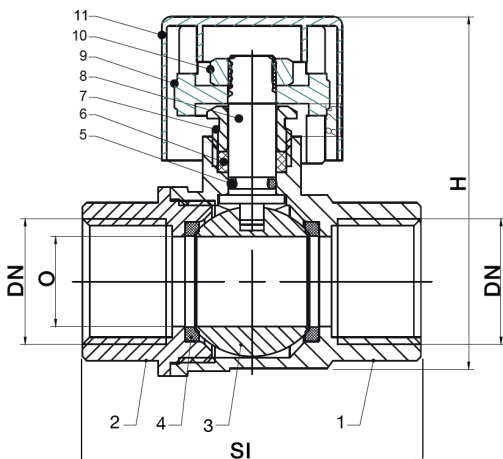
### Technical data

Max pressure: 40 Bar

Working temp: -20°C to 130°C

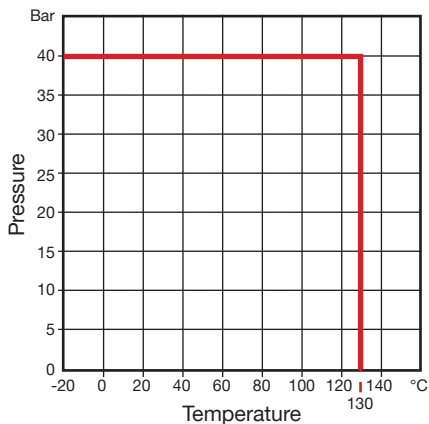
### Features

- Screwed BSP Taper ends (ISO 7/1) or NPT (ANSI B1.20.1)
- Anti-blow-out stem
- Full bore



DN	1/2"	3/4"	1"	1 1/4"	1 1/2"	2"
O	14.5	19.0	24.5	31.5	40.0	49.0
H	60.0	65.5	75.3	93.0	106.0	121.0
SI	57	67	77	88	99	121
Kv	16	30	48	100	170	230
Kgs	0.21	0.30	0.45	0.70	0.95	1.52

N.	Part Name	Materials
1	Body	DZR Brass CW602N
2	Bonnet	DZR Brass CW602N
3	Ball	DZR Brass CW602N Chrome Plated
4	Ball Seat	PTFE
5	O-Ring	NBR
6	Stem Packing	PTFE
7	Stem	DZR Brass CW602N
8	Lock Nut	Brass CW617N
9	Handle	Brass
10	Nut	Stainless Steel 304
11	Cap	Plastic ABS



V1. Dimensions in mm

This data sheet is designed as a guide and should not be regarded as wholly accurate in every detail. We reserve the right to amend the specification of any product without notice.