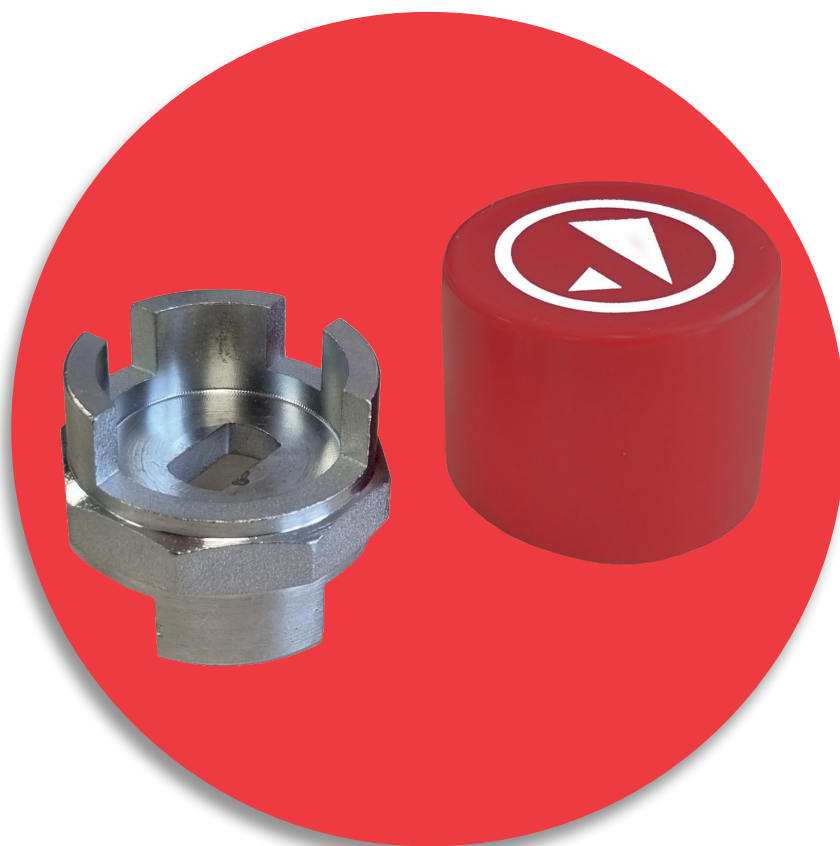




Installation & Operating Manual



ART 95 Lockshield Nut & Cap to suit ART 40, 41, 50, 59 & 89 Ball Valves

Albion Valves (UK) Ltd
www.albionvalvesuk.com
Email: sales@albionvalvesuk.com
Tel: 01226 729900



Contents

1. Introduction
2. Technical Data
3. Lockshield Assembly Instructions
4. Operation

1. Introduction

The purpose of this document is to provide instructions for assembling the ART 95 Lockshield Nut & Cap onto Albion's ART 40, ART 41, ART 50, ART 59, & ART 89 Ball Valves.

You will require an adequately sized socket and wrench to suit the valve size.

A complete risk assessment should take place prior to work commencing.

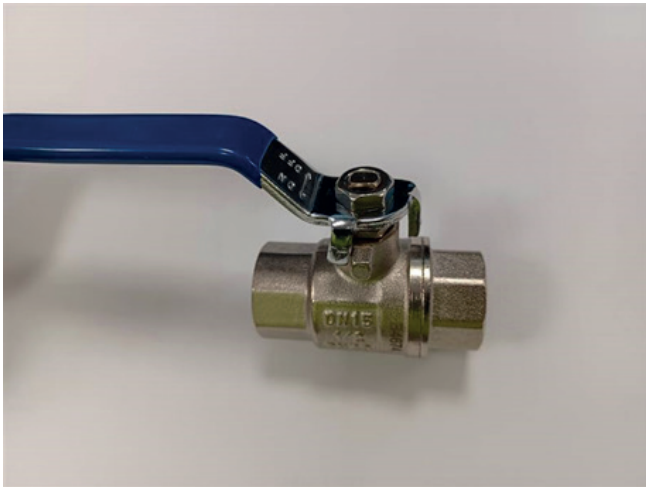
2. Technical data

Lockshield Type	Size Range	ART No.
D1	DN15 – DN20 ½" – ¾"	ART 40 ART 41 ART 50 ART 59 ART 89
D2	DN25 1"	ART 40 ART 41 ART 50 ART 59 ART 89
D3	DN35 – DN42 1.1/4" – 1.1/2"	ART 40 ART 41 ART 50 ART 59 ART 89
D4	DN54 2"	ART 40 ART 41 ART 50 ART 59 ART 89

3. Lockshield Assembly Instructions

Step 1

Remove the handle from the valve, this can be done by removing the existing (lever) handle via the retaining nut. Use an adequately sized socket and wrench for this operation. Please keep the retaining nut safe as this is to be used for installing the lockshield device.

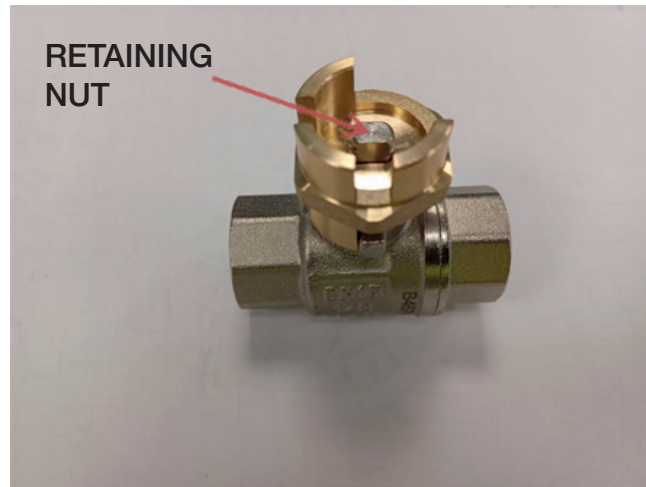


Step 2

Place the lockshield device on the valve.

Please note: the side with two locating tabs is the bottom and will be placed on the stem as per below.





Step 3

Using the original retaining nut, tighten the lockshield device in place using an adequately sized socket and wrench, and then place the cap securely over the lockshield device.



4. Operation

There are two ways to operate the lockshield device, once the cap has been removed.

1. By using the shaft of a screwdriver / Allen key, this is to be inserted between the gaps of the locating tabs and rotated open / closed.



2. By using a spanner to rotate the lockshield device into the open/closed position.



Point to note: If the locating tab is on the left-hand side of the stop tab, the valve is in the open position, if the locating tab is on the right-hand side of the stop tab, the valve is in the closed position.



VALVE IN OPEN POSITION



VALVE IN CLOSED POSITION

3. Replace the cap





About Albion Valves (UK) Limited

Albion Valves (UK) Limited has been in the industrial heating and valve market for over 40 years, with this comes a wealth of knowledge and expertise that allows us to support our network of independent distributors and their customers.

Albion aims to supply a readily available, complete, quality valve solution alongside excellent cradle-to-grave support and service.

That is why we say, 'It's all at Albion'.

Quality

Whatever you need, you can rest assured that if it comes from Albion it has been designed and manufactured to deliver optimum performance and is accredited with the necessary approvals. Our in-house quality and technical departments are always on hand too!

Service

Our cradle-to-grave approach means you will never be on your own. Whether you need assistance with your system designs, an industry-leading turnaround time on your quote, or some help with commissioning after installation, we have a team to help!

Delivery

We know that time is money, and when a priority project depends on a part, you can trust Albion to deliver. We deliver 95% of products the next day with 99.98% accuracy!

Choice

We may have started with a single brass ball valve, but our range has grown substantially since and we can now offer a full building services valve solution, alongside a comprehensive range of valves for the industrial and process markets.

It is becoming more and more apparent to the industry, that it really is, all at Albion.